

DRAWING NUMBER
53/81

81

VALENCIA

BEING A REPLAT OF TRACT "H" OF BOCA POINTE NO. 2 AS RECORDED IN PLAT BOOK 47,
PAGES 26 AND 27 OF THE PUBLIC RECORDS OF PALM BEACH COUNTY, FLORIDA
IN PART OF SECTION 33, TOWNSHIP 47 SOUTH, RANGE 42 EAST
PALM BEACH COUNTY, FLORIDA
IN THREE SHEETS SHEET NO. 2

GEE & JENSON
ENGINEERS - ARCHITECTS - PLANNERS, INC.
WEST PALM BEACH, FLORIDA
JULY 1985

SCALE IN FEET
SCALE 1" = 40'

BOCA POINTE NO. 1
PB. 42 PGS. 141-143

STATE OF FLORIDA
COUNTY OF PALM BEACH
This plat was filed for
record at _____ M. this _____ day
of _____ 1985, and duly
recorded in Plat Book No. _____
on Pages _____ and _____
JOHN B. DUNKLE
Clerk Circuit Court
By: _____ D.C.

DRAWING NUMBER

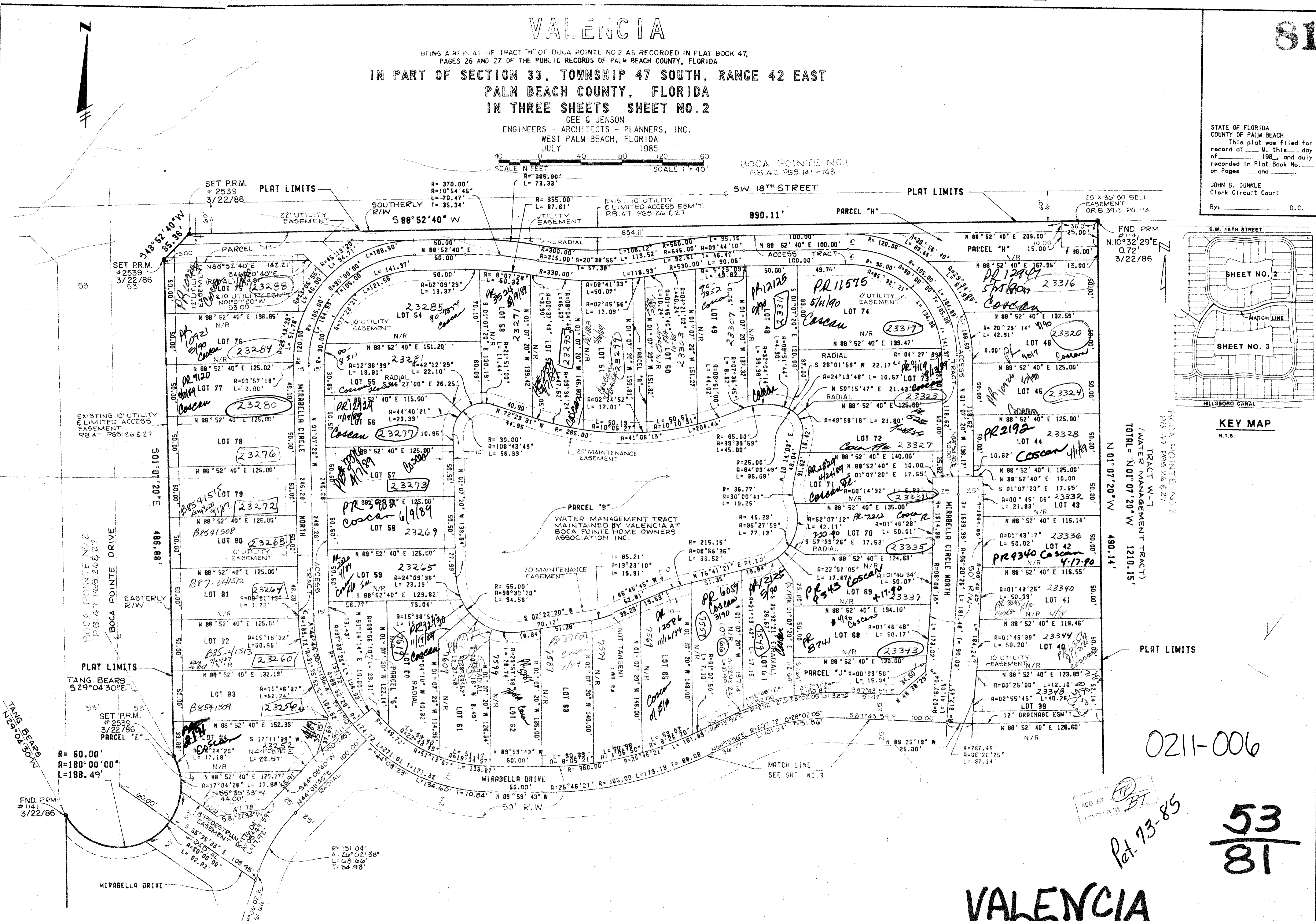
DRAWING NUMBER

DRAWING NUMBER

PLAN HOLD CORPORATION • IRVINE, CALIFORNIA
RECORDED BY NUMBER 0248

PLAN HOLD CORPORATION • IRVINE, CALIFORNIA
RECORDED BY NUMBER 0248

PLAN HOLD CORPORATION • IRVINE, CALIFORNIA
RECORDED BY NUMBER 0248



0211-006

Pat. 73-85

53/81

VALENCIA